



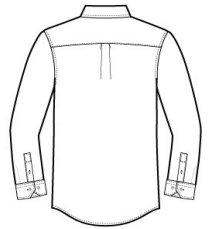
Thoroughly updated, this crisp nailhead shirt has a silky feel and a wrinkle-resistant finish for exceptional non-iron performance. 4-ounce, 60/40 cotton/polyester with taped seams, RH engraved buttons and a shirttail hem to elevate the office-ready look. Button-down collar, left chest notched patch pocket, back box pleat, notched adjustable cuffs and button-through sleeve plackets.

**CARE INSTRUCTIONS**

Machine wash cold with like colors, only non-chlorine bleach when needed, tumble dry low, warm iron if needed.

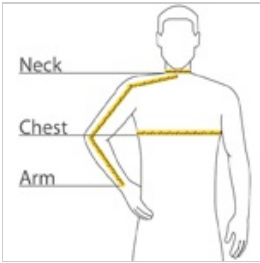


front



back

**HOW TO MEASURE**



**CHEST**

With arms down at sides, measure around the upper body, under arms and over the fullest part of the chest.

**ARM**

Place hand on hip. Start at the center of the back of the neck and measure across the shoulder, to the elbow, and then down to the wrist.

**NECK**

Measure around the base of the neck, inserting a finger or two between the tape and neck for comfort.

**SIZE CHART**

	XS	S	M	L	XL	2XL	3XL	4XL
Chest	32-34	35-37	38-40	41-43	44-46	47-49	50-53	54-57
Neck	14 1/2 - 15	15 - 15 1/2	15 1/2 - 16	16 - 16 1/2	16 1/2 - 17	17 - 17 1/2	17 1/2 - 18	18 - 18 1/2
Arm	30 1/2	32	34	35	36 1/2	37 1/2	38 1/2	39 1/2

**COLOR INFORMATION**

